

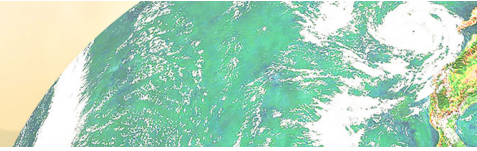
# Environmental Statement 2022



# Table of contents

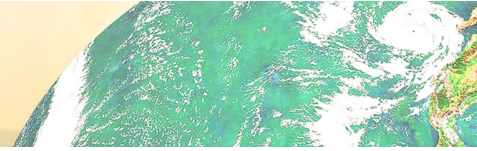
Executive Summary	2
Foreword	3
Description of Organisation	5
Description of Processes	6
Environmental Profile	7
Environmental Policy	8
Outline of Management system	9
Communication and consultation	10
Environmental Aspects	11
Environmental Performance in 2022	12
Performance Data	13
Energy Consumption	14
Water consumption	15
Waste	16
Climate change	17
Biodiversity	18
Emissions to Water	19
Vendors	20
Legislative Compliance	21
2023 Key performance indicators	22
2023 Objectives	23
Stakeholder Relations	24
The Future	25
Verification and Validation	26





## Executive summary

1. This report presents the public Environmental Statement on the performance of Wockhardt UK. The report covers the period from 1st January to 31st December 2022 and relates solely to the activities undertaken at Wockhardt UK, Ash Road North, Wrexham, LL13 9UF.
2. By publishing this report, Wockhardt UK aim to prove our ongoing commitment to continually improving our environmental performance and publicly publishing our progress.
3. Environmental performance highlights of 2022 include:
  - Expansion of the management system
4. This report is a general review of our entire environmental management system with a view to evaluating the effectiveness in delivering improvements in environmental performance. A review of the environmental performance in 2022 are presented.
5. The Site NACE code is C21.2.0 Manufacture of Pharmaceutical Preparations



## Foreword

6. Wockhardt UK is part of the Wockhardt Group. The UK site was originally established in 1950.

7. Company information can be found: <https://wockhardt.co.uk>

For further information regarding environmental performance, management or sustainability within the organisation, please address any queries to the Managing Director at the Wockhardt UK.





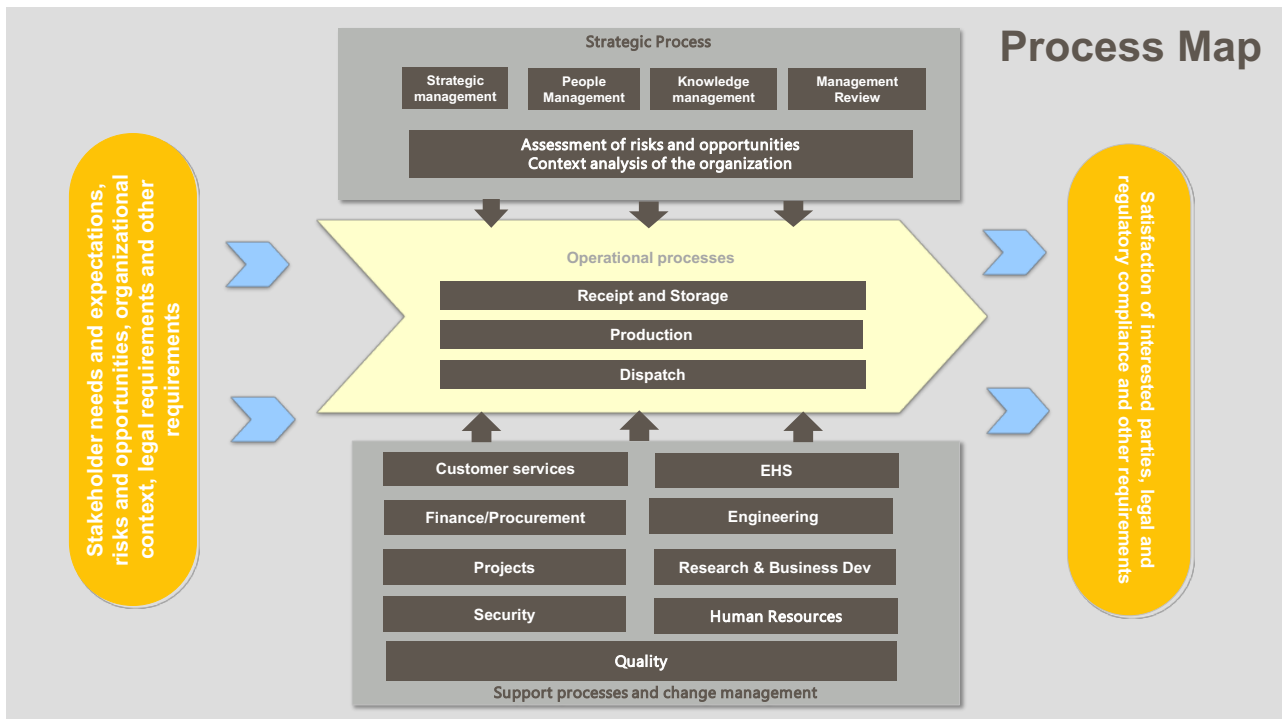
## Wockhardt UK Statement

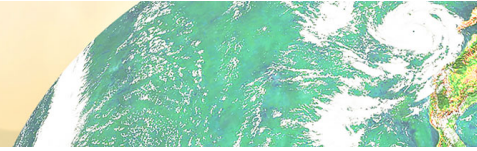
This statement which applies to Wockhardt UK sets out our environmental policy and how we plan to deliver against it. As an organisation we are committed to protecting our planet and we recognize our responsibility to do so. We are dedicated to providing world class services to our stakeholders and fostering an environment where #life wins.

“Wockhardt UK recognises that respect for the environment plays an integral part in effective business management and is fundamental to a successful business strategy. It is a primary and continuing policy of the Company to minimise the adverse effect of its activities upon the environment. The Company is dedicated to protecting human health, natural resources and the global environment.” Ravi Limaye, Managing Director, Wockhardt UK.

## Description of organisation

8. The company operates a sterile manufacturing facility with an annual capacity of 9.5 million doses.
9. The structure of the company is detailed as:

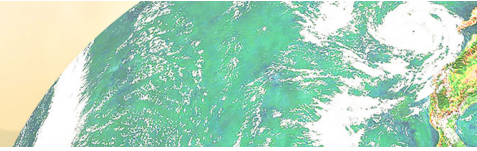




## Description of processes

10. Sterile manufacturing of cartridges, ampoules and vials, aseptically prepared and terminally sterilised.
11. Environmental impacts of this operation include the use of energy including electricity and natural gas. Creation of a variety of waste streams including waste that needs to be disposed of by incineration. Minimal potential of emissions to air, land and water.
12. The facility takes up 56,856 square metres.





# Environmental profile

## 13. Certification and external endorsement:

- Aiming towards ISO 14001 or equivalent Wockhardt:
  - Maintain an externally audited register of our direct and indirect environmental impacts, forming the foundation of our management system.
  - Identify our significant environmental impacts
  - Monitor and manage our environmental impacts
  - Maintain a database of legal requirements
  - Set specific targets for environmental improvement
  - Under a regular audit and inspection process for continual improvement

# Environmental policy

14. Wockhardt have produced an Environmental Policy.

15. The policy was last reviewed Jan 2023 and can be found below:

## Environmental Protection Policy Statement

Wockhardt UK ( CP Pharmaceuticals and Wockhardt UK Ltd ), recognises that respect for the environment plays an integral part in effective business management and is fundamental to a successful business strategy. It is a primary and continuing policy of the Company to minimise any adverse effect of its activities upon the environment. The Company is dedicated to protecting human health, natural resources and the global environment.

In meeting these responsibilities and complying with legislation and best practice, Wockhardt UK promotes and sponsors the following objectives which shall be reviewed annually:

- Design, develop and manufacture products that present minimal risks to the environment and the least practicable risk to the health and safety of employees associated with the production, storage and distribution of products.
- Adopt environmental sustainability practices and design and maintain plant, equipment, systems and working conditions to minimise incidents and the risk of environmental damage.
- Adopt positive purchasing and procurement practices for goods and services so as to minimise potential adverse environmental impacts.
- Reduction, re-use and recycling of materials wherever possible to minimise waste together with a reduction in energy consumption and our carbon footprint to minimise the risk of environmental damage.
- Where reasonably practicable, replacement of organic solvents with materials with a low volatile organic solvent content or with water based materials.
- Implementation of technologies and procedures to prevent contamination to water courses and to minimise emissions to air.
- The Company will work with suppliers who themselves adopt good environmental and sustainability practices.
- All incidents detrimental to the environment must be reported, investigated and action taken to prevent reoccurrence.
- Ensure employees are aware of the environmental impacts of their work activities and encourage them through awareness and training to minimise those impacts.
- Continuous improvement in environmental performance to ensure on-going compliance with the policy and relevant legislation together with implementation of inspections and a review of activities to monitor progress.

Wockhardt UK is committed to environmental protection and sustainability and will minimise the environmental impact of its products and operations with careful planning, production, distribution and disposal to ensure the Company's activities are in harmony with the environment. Employees have an integral role in delivering these objectives.

Wockhardt UK recognises and accepts that its Directors and Managers have ultimate responsibility for initiating and endorsing this policy. This document shall be communicated to all employees and available to interested parties.

DocuSigned by:  
  
 Signed : .....  
 Ravi Limaye, Managing Director, Wockhardt UK

19-Jun-20  
 Date: .....



## Outline of management system

16. Wockhardt operates an integrated Environmental, Health and Safety system.
17. The Site Health, Safety and Environment Management Manual covers all aspects of site activities and personnel. Its main purpose is to enable the site to implement, monitor and improve the sites health, safety and management systems and to ensure the procedures and systems are in place to enable the site to comply with its relevant policies.
18. Completion of internal audits and management review is key to the ongoing success of the system detailed in HSOP-032.
19. The management is continually monitored for effective use and improvements by senior management at monthly review meetings.
20. The senior leadership team participate in an annual review of the sites progress.
21. Training needs of the staff involved in the management system is identified, monitored and resourced.
22. Resource to deliver the management system are reviewed..
23. The site performs an annual evaluation of compliance of the management system.





## Communication and consultation

- 24. Wockhardt UK are fully aware that employee education and involvement is crucial to the effectiveness of all operations.
- 25. All new employees receive an induction covering legal and environmental issues.
- 26. All existing employees have undergone environmental awareness training.
- 27. The site operates a monthly review in which significant changes are considered and escalated as required, including legislative change.
- 28. Feedback from employees is invited via the review meetings, which take place monthly where each level and department of the organization are represented.
- 29. Key information from this statement is communicated to employees via, minutes are placed on noticeboards so that all employees have access. Each manager is responsible for ensuring the information is read and understood.



## Environmental aspects

30. The site aspect register was last updated May 2023

31. Key significant aspects are outlined below for normal operating conditions and abnormal/emergency situations:

Key significant aspects	Environmental Impacts	Controls/mitigation
Energy usage	Indirect use of fossil fuels which can contribute to greenhouse gases	Part of Climate Change Agreement, energy management system and procedures set up.

32. The significance of each aspect is calculated based on applicable legislation, concern from interested parties, severity of impact, frequency of occurrence and the level of management control.

33. Objectives, Targets and Management Programmes will focus on the significant aspect as a priority, while all aspects are reviewed for accuracy on an annual basis or immediately after a significant change in activities.

34. These annual or significant changes in activities reviews are conducted as part of the review meetings that are attended by the sites senior management team.

35. Performance reviews against objectives and targets along with key performance indicators are also conducted as part of this review.

36. The Safety and Environmental reports including targets and objective updates for all these meetings are made available to all employees via the sites communication notice boards.

# Environmental performance in 2022

37. There are various areas of our operations that Wockhardt have focused on. These are detailed below in Figure 1.

Figure 1



38. The results of the environmental objectives for 2022 are listed in the following table:

Table 1. 2022 Targets and Objectives

2022 Targets and Objectives				
Significant Aspect	Impact	Objective	Specific Target	Measured output achieved
Electricity usage) -	Indirect use of fossil fuels which can contribute to greenhouse gases	Energy reduction to achieve to 2022 Target efficiency	To monitor the usage levels of specific high-risk tasks with sub metering.	80% No monitoring in building 3

39. Wockhardt's Key performance indicators were developed around our key environmental impact areas and are also used as a monitor of operational efficiency.



## Performance data

40. Key operational and material usage data for 2022 is detailed below:

Table 2. Key operational and material usage data 2022

Production	Quantity (thousands)
Units produced	9,526.947

# Energy consumption

41. Energy consumption information for each fuel type, compared against the annual production output is listed in Table 3.

Table 3. Energy consumption information

Energy	Quantity (MwH) A	Processed (thousands) B	Ratio A/B
Electricity	7772.083	9,526.947	0.810
Natural Gas (boiler operation)	9816.3	9,526.947	1.03
Total	17,588.383	9,526.947	1.846

42. The following table shows the fuel usage comparing 2021 values v 2022 values.

43. Usage has increase because of change of business operation since vaccine production has been stopped.

44. Electricity contract is 100% REGO.

Table 4. 2022 v 2021 usage

Energy	2021	2022
Electricity (MWH per unit)	8512.362	7722.083
Natural Gas (MWH per unit)	8606.20	9816.3

## Water consumption

45. Water consumption information compared against the annual production output is detailed in Table 5. Water consumption data has been taken from Jan 6<sup>th</sup> 2022 to Jan 6<sup>th</sup> 2023.
46. The use of recycled or reclaimed water systems has not been investigated due to the quality requirements of the water.

Table 5. Water consumption

Water source	Consumed (cubic metres) A	Processed (thousands) B	Ratio A/B
Mains	63,105	9,526.947	6.624



# Waste

47. Waste production information is detailed in Table 6 for each waste type, compared against the annual production output. Table 7 details our waste providers.

Table 6. Waste production information

Waste Code	Recycled	Quantity (A)	Processed (thousands) B	Ratio A/B
<b>Hazardous Waste</b>				
Clinical Waste 18 01 03*	No	17.727 tonnes	9,526.947	0.0019
<b>Non-Hazardous Waste</b>				
Medicinal Products 18 01 09	No	43.886 tonnes	9,526.947	0.0046
Glass 20 01 02	Yes	101,760 litres	9,526.947	10.683
Food/General 20 01 08	Yes	94.948 tonnes	9,526.947	0.01
Plastic 20 01 39	Yes	7.62 tonnes	9,526.947	0.0008
Cardboard/Paper 20 01 01	Yes	10.16 tonnes	9,526.947	0.001

Table 7. Waste providers

Type	Waste provider	Registration
Medicinal Products	Tradebe	CBDU440995
Clinical waste	Tradebe	CBDU440995
Paper/Cardboard	Parry Evans	CBDU10472
Plastic	Parry Evans	CBDU10472
Glass	Gaskills	CBDU145163
Domestic/General	Gaskills	CBDU145163

# Climate change

## GHG

48. Greenhouse Gas Report 2022 is summarized in the results detailed below:

Table 8. Greenhouse Gas summary report

Scope	Source	CO <sub>2</sub> (tonnes)	CH <sub>4</sub> (tonnes)	N <sub>2</sub> O (tonnes)	Total (tonnes)	Processed (thousands) B	Ratio A/B
Stationary combustion	Natural Gas	1981.715	2.748	1.079	1985.5	9,526,947	0.208
Fugitive emissions	Oils	*	*	*	*	*	*
	Lubricants	*	*	*	*	*	*
	Fire extinguisher	*	*	*	*	*	*
	Air conditioning	3.132	*	*	*	*	*
	Pool cars	3.302					
Electricity	-	-	-	-	1493.3	9,526.947	0.155
Total	-	-	-	-	3478.8	9,526.947	0.365

## Emissions to Air

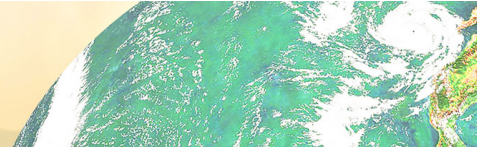
49. Wockhardt has filtered emission sources to atmosphere and the boiler stack which is not required to be tested.

# Biodiversity

50. This information details the site biodiversity.

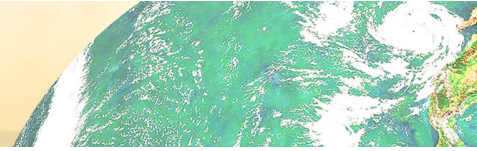
Table 10. Biodiversity

	Square metres	Processed (thousands) B	Ratio A/B
Used/Occupied	19,417	9,526.947	2.038
Total	56,856	9,526.947	5.968



## Emissions to water

51. The site operates with the Dee Valley Protection Zone, and operates with a Natural Resources Wales trade effluent consent that is monitored by sample testing.
52. All results for 2022 were within specification.



## Vendors

- 53. Vendor assessments are performed on all suppliers including the signing of a supplier code of conduct confirming they consider environmental and sustainability performance.
- 54. All current vendors are included in Supply chain environmental performance assessment.



# Legislative compliance

Table 11. Legislative compliance

KPI	Target	Actual
Monetary value of fines for environmental prosecutions (£ per year)	0	0

55. The target (see table 11) for legal compliance has been achieved in 2022.

56. Wockhardt maintains a legal register and updates it regularly to ensure compliance with all the relevant legislation.

57. Legislative register was last updated May 2023.

58. The site can be contacted via the Wockhardt website with any issues or complaints.

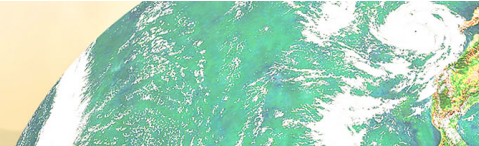
59. There were no environmental complaints received in 2022.

## 2023 Key performance indicators

60. To allow us to report consistent data in our next report, the KPIs that we will collect data on in 2023 are enclosed in the table below. As a system to monitor continual improvement, we have also set ourselves business targets for 2023 measured via the monthly review.

Table 12. Key Performance Indicators

Key Performance Indicators	Target	Impact Area
Energy	-10%	Material use

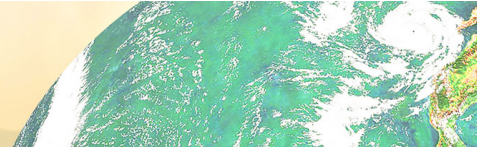


## 2023 Objectives

61. The following objectives have been developed based on the significant impact.

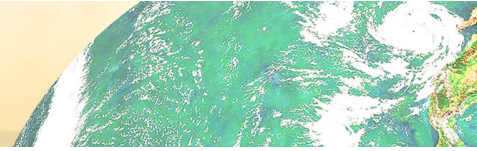
Table 13. 2023 Objectives

Significant Aspect	Impact	Objective	Specific Target
Electricity usage	Indirect use of fossil fuels which can contribute to greenhouse gases	Energy reduction to achieve to 2023 Target efficiency	To monitor the usage levels of specific high-risk tasks with sub metering. Reduce usage by 10%



## Stakeholder relations

62. Wockhardt undertakes to engage our employees and contractors in environmental management on-site. The company has a healthy relationship with our regulators, the Environment Agency and Natural Resources Wales.
63. The company also strives to be a good neighbor to surrounding activities at all times.

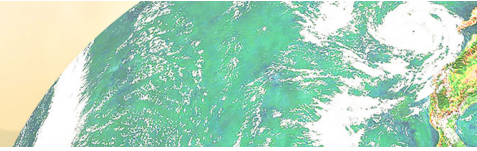


## The future

64. Our future plans at Wockhardt are to:

- a. Achieve a recognized third party Environmental Certification
- b. Expand the monitoring of the site to reduce energy usage





## Verification and validation

65. Wockhardt seeks verification of this Environmental Statement from a third party.



Ash Road North  
Wrexham, LL13 9UF  
[wockhardt.co.uk](http://wockhardt.co.uk)